

# Track carbon

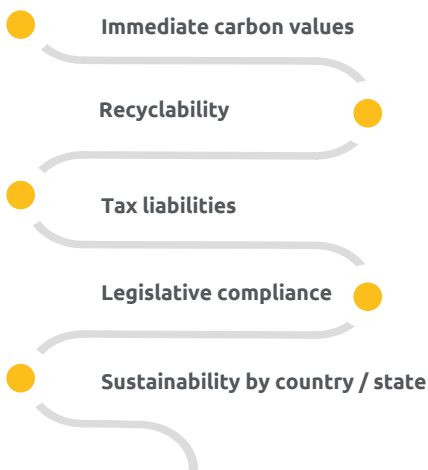
## Immediately across every single packaging component

### A proactive partnership

We are proud of our partnership with CarbonQuota – giving brands and retailers a broader view of sustainability in packaging.

**e-halo** leverages Aura's unique blend of expert consultancy and pioneering technology to help global retailers, brands and manufacturers' future technical and sustainable packaging requirements at the touch of a button, using live, real-time data.

**CarbonQuota** technology seamlessly integrates with **e-halo**, which tracks and analyses:



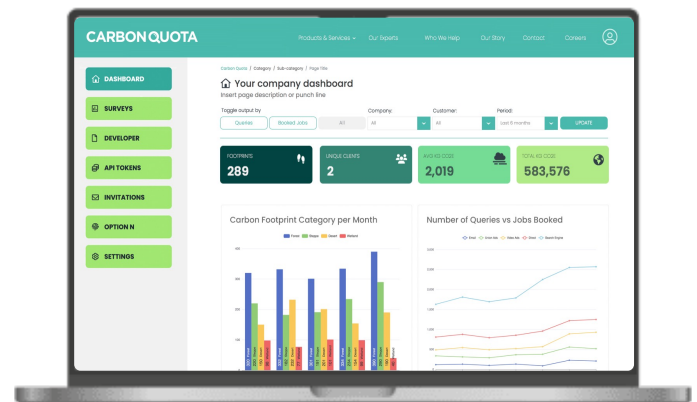
**e-halo** generates carbon values instantly to enable real-time evaluation of your packaging **before** commercialization. Live and accurate dashboards enable tracking, analysis and reporting of your Scope 3 carbon emissions across your global packaging value chain. Accurate data and carbon measurement is the foundation of effective sustainability management. Aura's state-of-the-art platform, **e-halo** makes it easy to track, analyse, and report on your carbon footprint.

### What sets CarbonQuota apart?

**CarbonQuota's** mission is to enable responsible businesses and their supply chains to accurately measure, report, reduce and track their environmental impact through our automated carbon footprint technology and bespoke carbon strategies. CarbonQuota is a leading provider of carbon management and sustainability solutions. Their team of experts combines deep industry knowledge with cutting-edge technology to help businesses navigate the complex landscape of environmental regulations and sustainability reporting.

### How does it work?

**CarbonQuota's** carbon calculator sits within Aura's **e-halo** program, allowing organizations to **instantly calculate** the carbon impact of their packaging as well as utilizing **e-halo's** existing recyclability functionality.



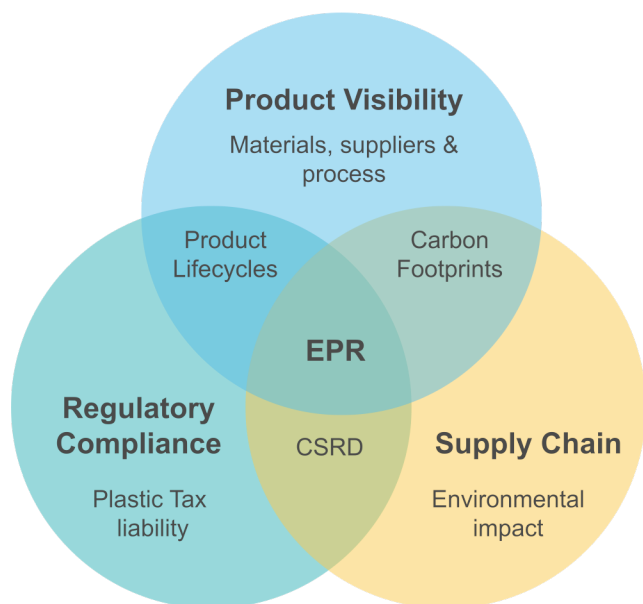
# CARBON QUOTA



# Aura & CarbonQuota: A powerful partnership

## Aura & CarbonQuota:

Gain holistic transparency across your products & supply chain:



## Achieve your sustainability goals:

### Component level visibility

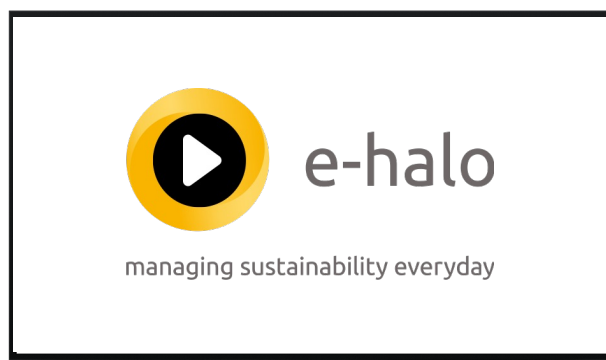
- Access material recyclability at a component level
- Assess full cradle-to-grave lifecycle, including delivery to your customer and end-of-life disposal

### Regulatory compliance

- Prepare for regulatory submissions including CSRD & CBAM
- Achieve EPR readiness statements and due diligence
- Review your Plastic Tax liability assessments

### Supply chain

- Eco-design your supply chain across the product lifecycle
- Collaborate with suppliers to decarbonize
- Secure environmental performance management across your supply chain



## The benefits

- ✓ **Calculate carbon immediately:** Review carbon emissions at the point of data entry.
- ✓ **Meet global packaging legislation:** Proactively manage compliance as legislation evolves, by territory.
- ✓ **Manage sustainability targets everyday:** Evaluate packaging recyclability and carbon metrics.
- ✓ **Drive continuous improvement:** Gain visibility of 'best in class' packaging specifications and optimize your packaging.
- ✓ **Gain time and cost efficiencies:** Utilize your customizable reporting dashboards.
- ✓ **Data visibility anytime, anywhere:** Access live and accurate packaging data online, 24/7.